

Postsecondary and Workforce Readiness Act: *Key Provisions and Opportunities*

**Sherri McLaughlin, NCC, ISCA Past President
School Counselor
Jacksonville High School**

**Vince Walsh-Rock, LCPC, ISCA President-Elect
School Counselor
Glenwood High School**

April 7th and 21st, 2017



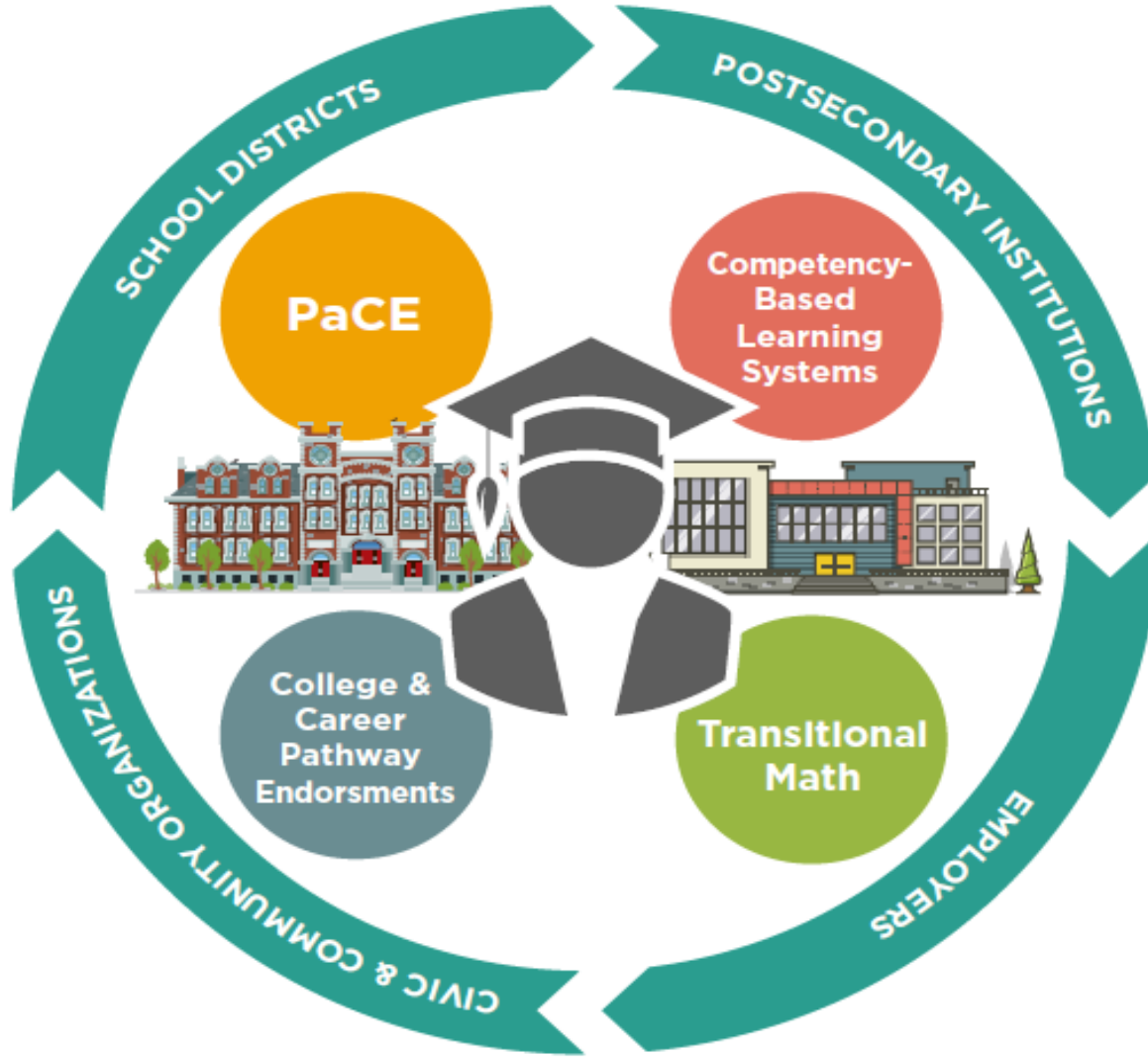
**College & Career
Readiness Committee**

PWR Act

- **Public Act 99-0674** (HB 5729); signed by Governor on 7/29/16
- **Four components:**
 1. Postsecondary and Career Expectations (PaCE)
 2. Pilot of Competency-based High School Graduation Requirements
 3. Scaling of 12th Grade Transitional Courses
 4. College & Career Pathway Endorsements on High School Diplomas

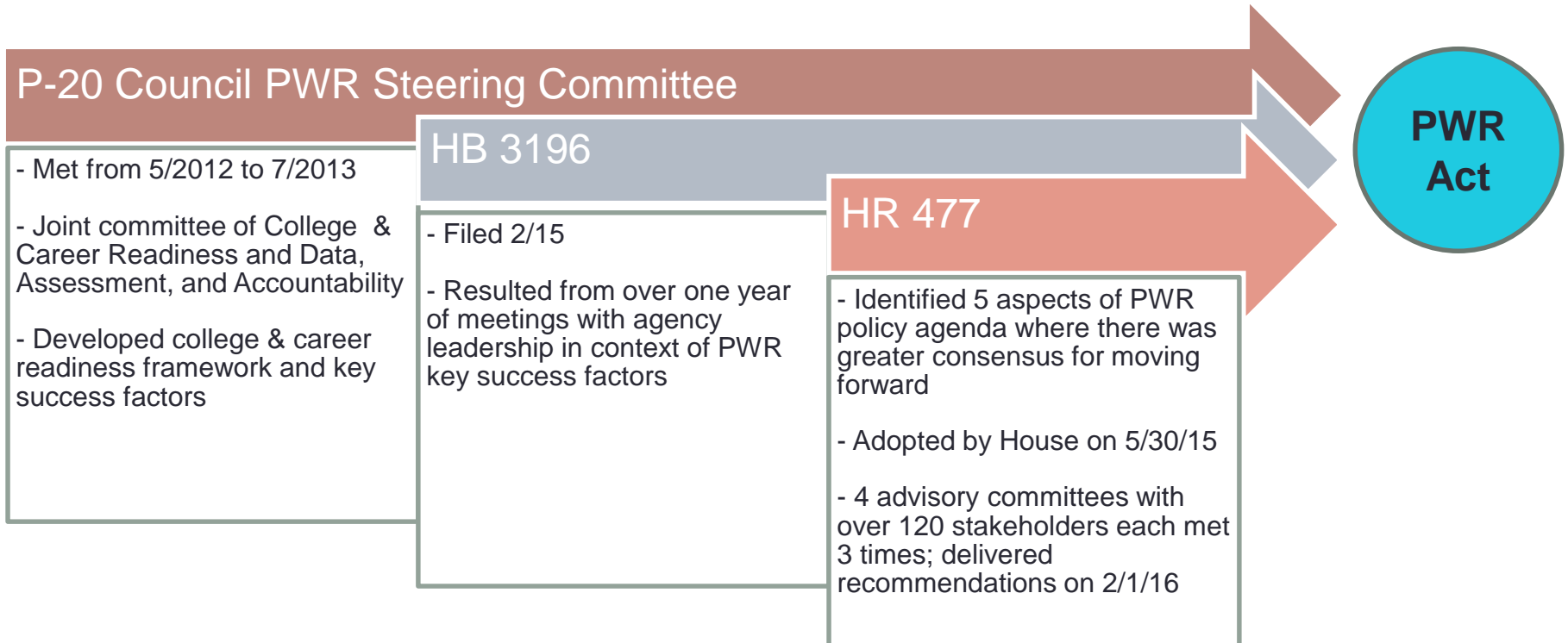


College & Career
Readiness Committee



College & Career
Readiness Committee

PWR Act Background

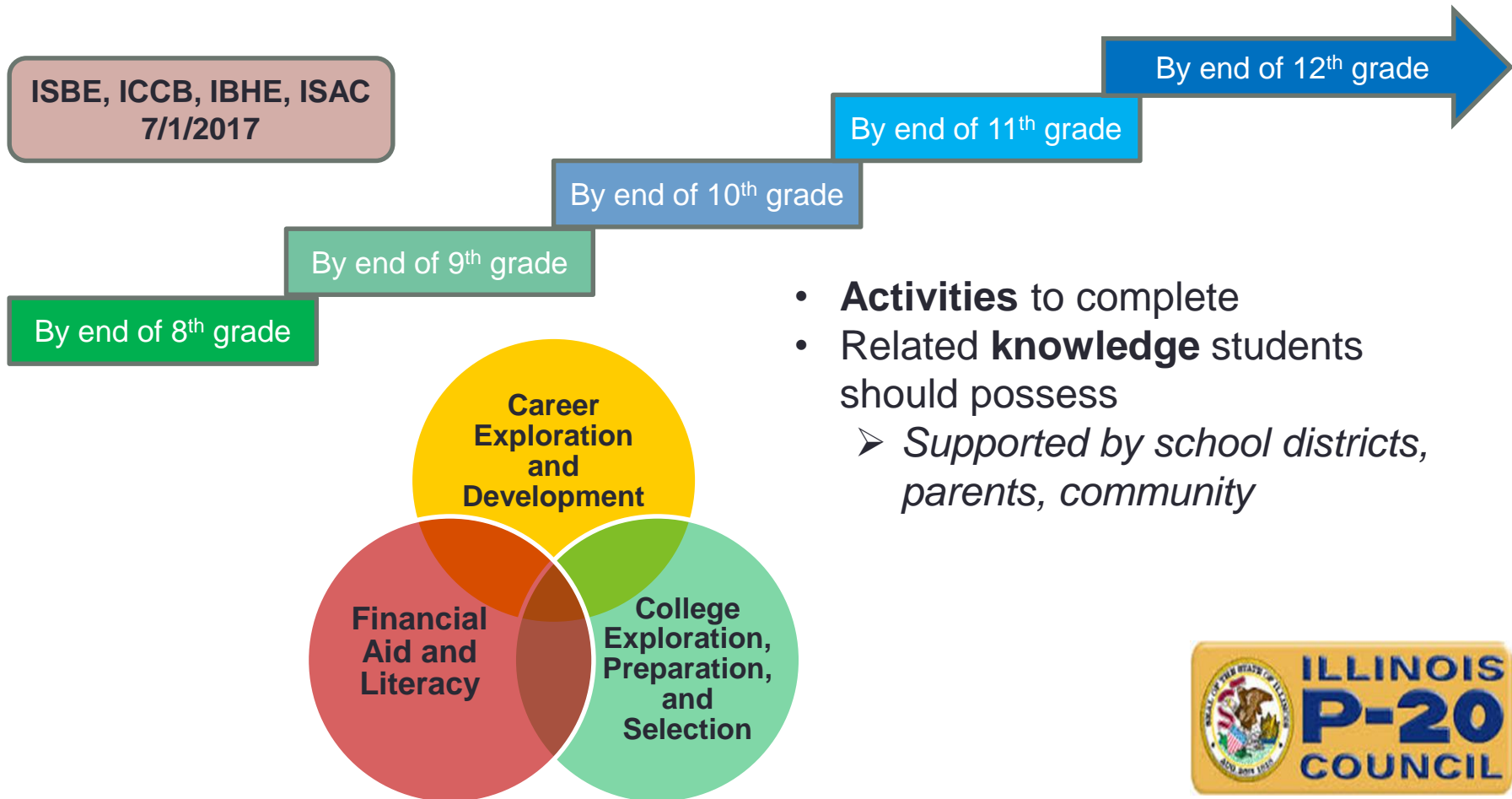


College & Career
Readiness Committee



College & Career
Readiness Committee

Model Postsecondary and Career Expectations



- **Activities** to complete
- Related **knowledge** students should possess
 - *Supported by school districts, parents, community*



College & Career
Readiness Committee

Illinois PaCE: Postsecondary and Career Expectations

Each student should have an individualized learning plan to help them make career and college decisions, plan a course of study, and make financial aid assessments with family members.

By the end of 8th grade

A student should be supported to:

- complete a career cluster survey
- attend a career exploration day
- complete a unit on education planning
- be exposed to a finance literacy unit in a course or workshop

A student should know:

- the concept of career clusters for further exploration
- possible career clusters of interest
- relationship between community service/ extracurricular activities and postsecondary (PS)/career goals

By the end of 9th grade

A student should be supported to:

- revisit career cluster survey and take a career interest survey
- complete an orientation to career clusters
- attend a postsecondary (PS) options workshop
- meet with a counselor to discuss coursework and postsecondary/career plans
- begin determining eligibility for AP courses
- outline a plan for community service/ extracurricular activities related to PS plans
- complete a financial aid assessment with a family member

A student should know:

- one or two career clusters for further exploration and development
- the relationship between HS coursework, attendance, and grades to PS plans
- importance of community service and extracurricular activities to PS and career plans
- general cost ranges of various PS options

By the end of 10th grade

A student should be supported to:

- visit at least one workplace aligned to career interests
- complete an orientation course to a particular career cluster or cluster grouping
- select a career pathway (CP) within a career cluster of interest
- begin determining eligibility for AP courses
- identify 2-3 adults to support him/her through the college and career selection process
- attend a college affordability workshop with adult family member

A student should know:

- educational requirements, cost, expected entry level, and midpoint salary for occupations in selected CP
- different types of PS credentials and institutions
- general timing of college entrance exams and apps
- benefit of early college credit opportunities to PS access and completion

By the end of 11th grade

A student should be supported to:

- revisit the career survey
- participate in a mock job interview
- create a resume and personal statement
 - identify an internship opportunity related to CP
- determine readiness for college-level coursework in Math/ELA and enrolled in either "catch up" or "speed up" course
- complete or enroll in at least one early college credit opportunity
 - attend a college fair
- visit at least 3 PS institutions
- take at least one college entrance exam

A student should know:

- app deadlines, test timing, cost, and prep for industry-based certification for CP
- career attributes related to career interests
 - entrance requirements, including app deadlines, for expected PS program of study
 - 3-5 match schools, one safety, and one reach school for PS program of study
 - negative impact of remediation on PS goals
- financial aid deadlines for chosen PS options

By the end of 12th grade

By 12/31 of 12th grade

A student should have:

- completed 3 or more admission applications to PS institutions
- met with a school counselor to ensure all steps in the PS admission process are completed on time
- attended a FAFSA completion workshop
- completed the FAFSA

By the end of 12th grade a student should be supported to:

- address any remedial needs in Math/ELA
 - obtain an internship opportunity relating to CP
 - if applicable, receive industry-based certification(s) relating to CP
- complete one or more team-based challenges or projects relating to CP
- attend a financial aid award letter workshop

A student should know:

- how CP courses and experiences articulate to degree programs at PS options
- estimated cost of each PS option
- affordability of PS options in relation to expected entry-level career salary and anticipated debt
- terms and conditions of any scholarship or loan



Opportunities for Leading Communities

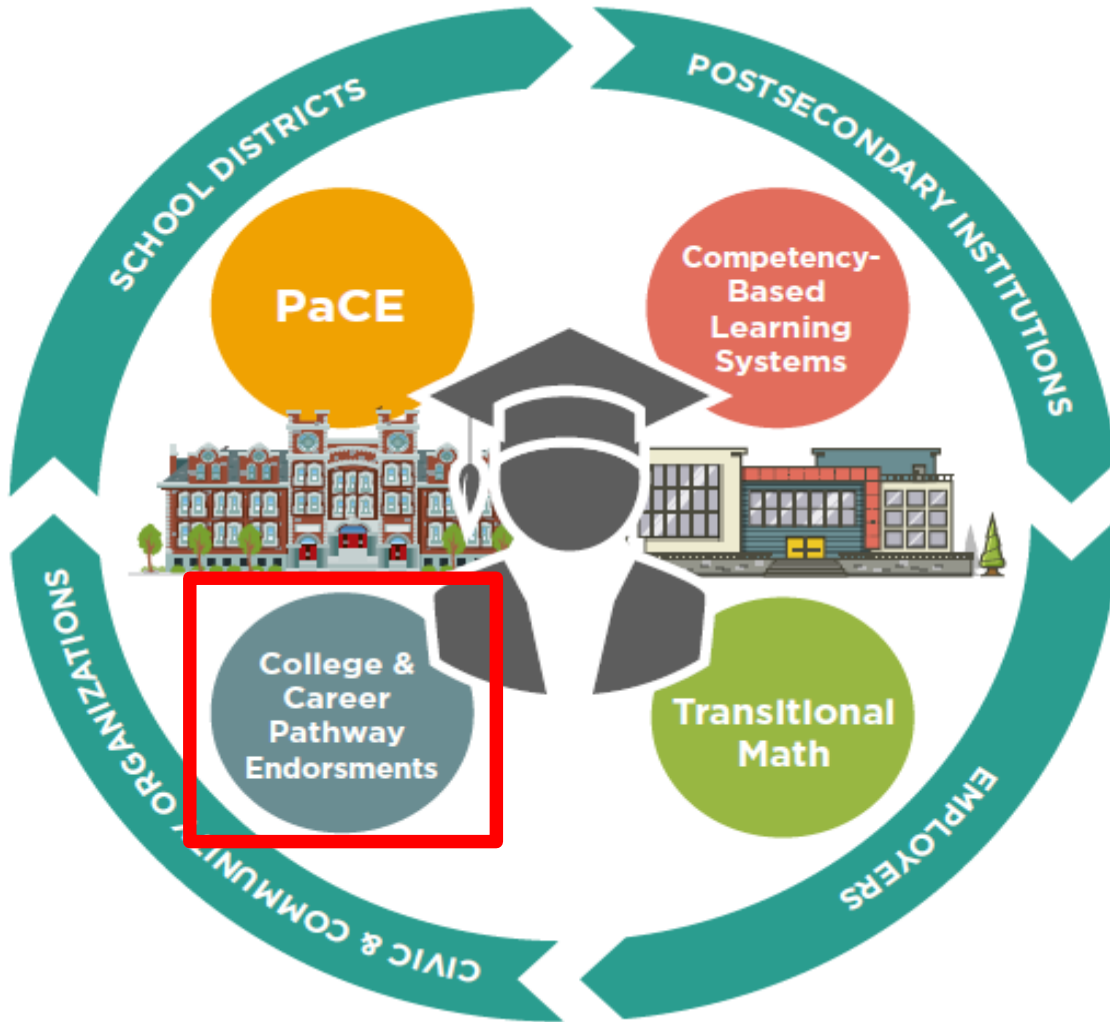
HBR Career Readiness Plan



Hinckley-Big Rock CUSD #429 defines career ready graduates as having the skills and motivation to pursue a self-directed goal, adapt to challenges along the way, and know the options to obtain their post-secondary career. It is our goal that all graduating seniors will have a defined plan and be career ready when they complete high school. This list of benchmark expectations will act as a guide for HBR staff, students, and parents as we plan and prepare for our students to be ready to go.

- ◆ skills and motivation to pursue a self-directed goal
- ◇ adapt to challenges along the way
- know the options to obtain their PS career

By the end of 5th grade	By the end of 8th grade	By the end of 9th grade	By the end of 10th grade
<p>A student should be supported to:</p> <ul style="list-style-type: none"> ◆ identify and set personal and academic goals ◇ consistently apply the SEL (Grit/Growth/Goal Setting) in daily practices ● gather information regarding training and education for jobs in field of choice ◆ create an inventory of interests and possible careers <p>A student should know:</p> <ul style="list-style-type: none"> ● the jobs and/or careers their parents hold ◆ the learning behaviors consistent with successful students 	<p>A student should be supported to:</p> <ul style="list-style-type: none"> ◆ complete a career cluster survey ● engage in annual career day ● take part in a financial literacy exercise ◆ attend a day with parent/guardian at work <p>A student should know:</p> <ul style="list-style-type: none"> ◆ the concept of career clusters for further exploration ◆ possible career clusters they are currently interested in ◇ the relationship between the skills acquired in community service and extracurricular activities and postsecondary career goals 	<p>A student should be supported to:</p> <ul style="list-style-type: none"> ● revisit/update the career interest inventory ● complete orientation to career clusters ● attend a PS options workshop ● complete 4 year plan with counselor ● outline a plan for school and community engagement aligned with PS goals <p>A student should know:</p> <ul style="list-style-type: none"> ● at least one career cluster for further exploration ● the relationship between coursework, school and community engagement, and outcomes to PS goals ◇ general cost ranges of various PS options 	<p>A student should be supported to:</p> <ul style="list-style-type: none"> ◆ complete orientation to a chosen CP ◆ chose a CP related to a career cluster ◆ identify 2-3 adults to support him/her through the PS planning/selection process ● attend a PS financial workshop with an adult family member <p>A student should know:</p> <ul style="list-style-type: none"> ● educational requirements, cost, entry level, and median salary for chosen CP ● different types of PS credentials and institutions ● general timing of exams and applications aligned with chosen CP ● benefit of early college credit related to PS goals



College & Career
Readiness Committee





Why?

- **Recognize and incentivize student attainment of** knowledge and demonstrations of skills important for both success in both postsecondary and employment
- **Encourage career exploration and development** to improve decision-making
- **Promote greater consistency** of college and career pathway program structures
- **Institutionalize college and career pathways** as a key strategy for postsecondary and career success

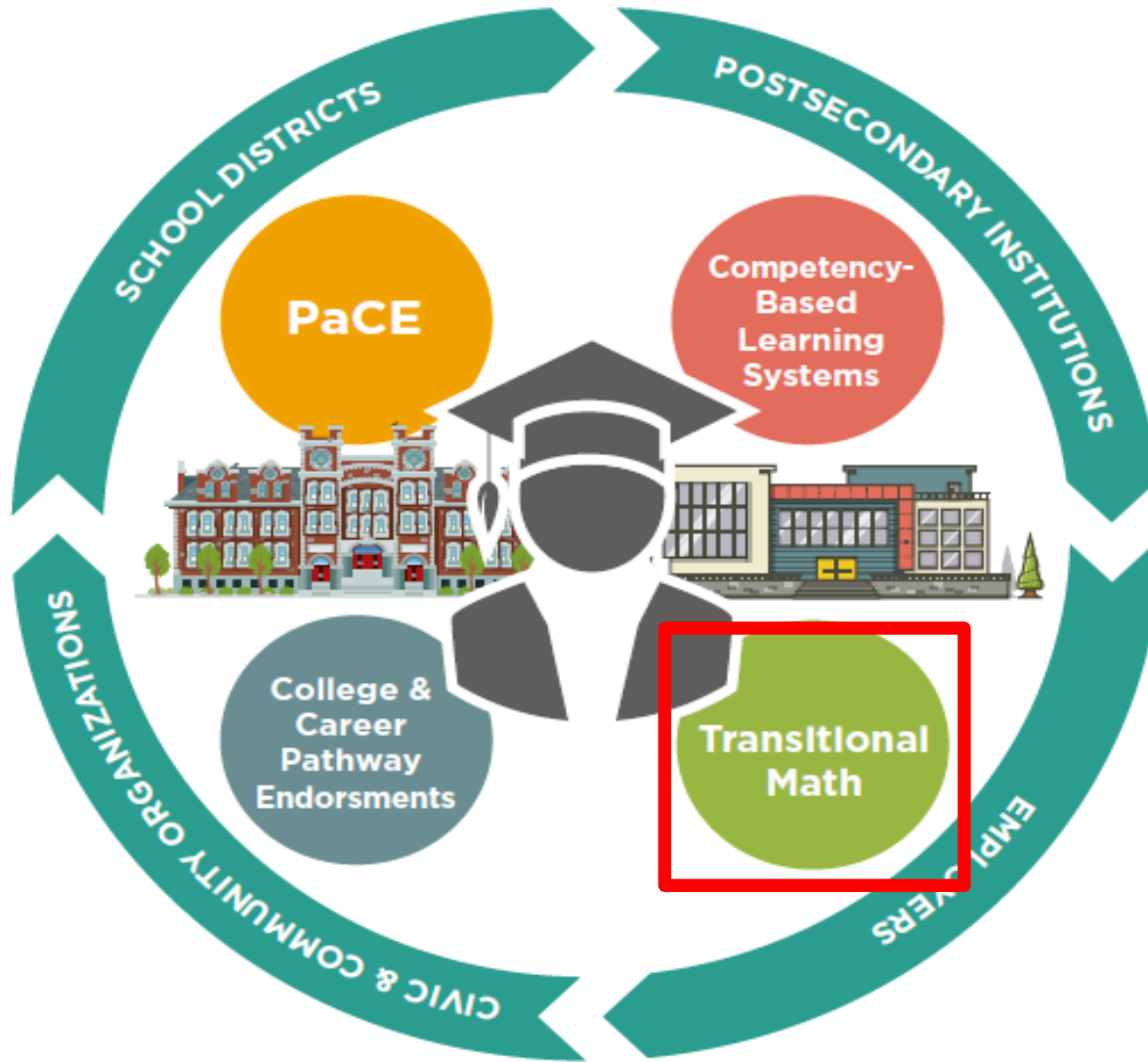


College & Career
Readiness Committee

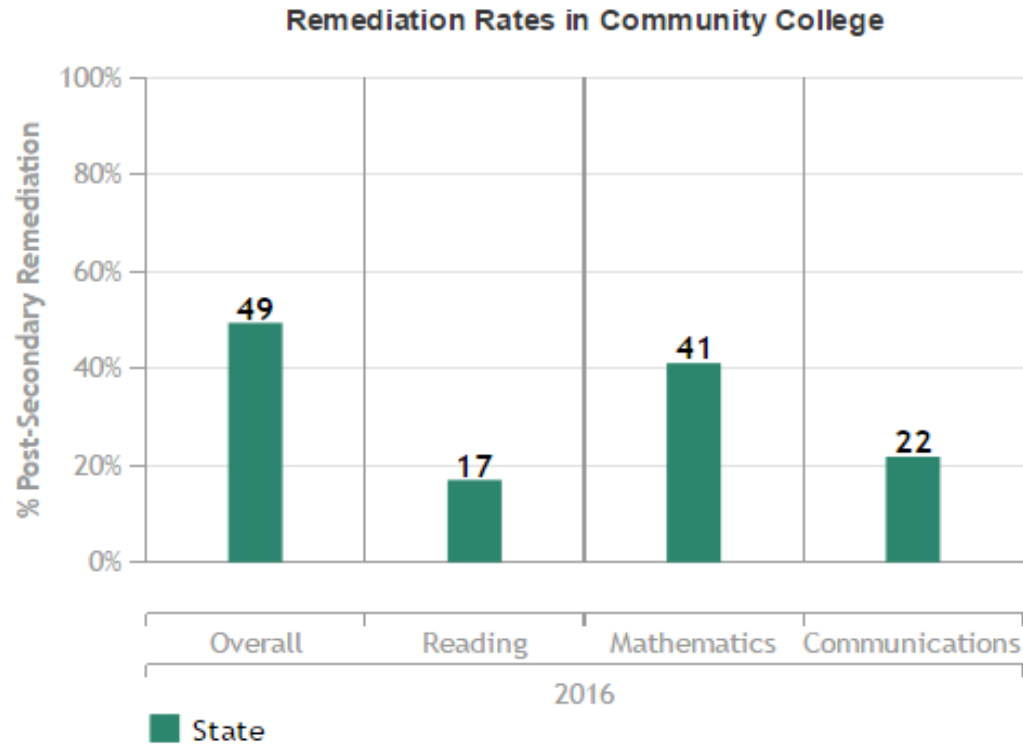
HB 5729 College & Career Pathway Endorsement Example: **MANUFACTURING**

	9 th	10 th	11 th	11 th or 12 th
Individualized Plan 	Individualized plan for college, career, and financial aid; resume; personal statement			
Career-focused Instructional sequence <i>(consult with EFE; 2 years of coursework or equivalent competencies)</i> 	Manufacturing Orientation and Safety (OSHA 10-based competencies with industry focus)	Quality Practices and Measurement* (MSSC, NIMS, AWS) Mfg. Processes & Production (MSSC, NIMS, AWS)*	Advanced topics* In: <ol style="list-style-type: none"> 1. Manufacturing Processes & Production (pre-apprenticeship) OR 2. Maintenance Awareness & Automation (MSSC) 	
			*2022-23 SY: Include at least 6 hours of early college credit	
Professional Learning 	At least 2 career exploration activities, or one Intensive	60 cumulative hours of paid or for-credit supervised career development experiences with a professional skills assessment		
	At least 2 team-based challenges with adult mentoring			
Academic Competencies 	Ready for non-remedial coursework in Reading and Math by high school graduation through criteria defined by district and local community college			

District and local CC certify articulation to cert./degree with labor market value



Why?



Class of 2014

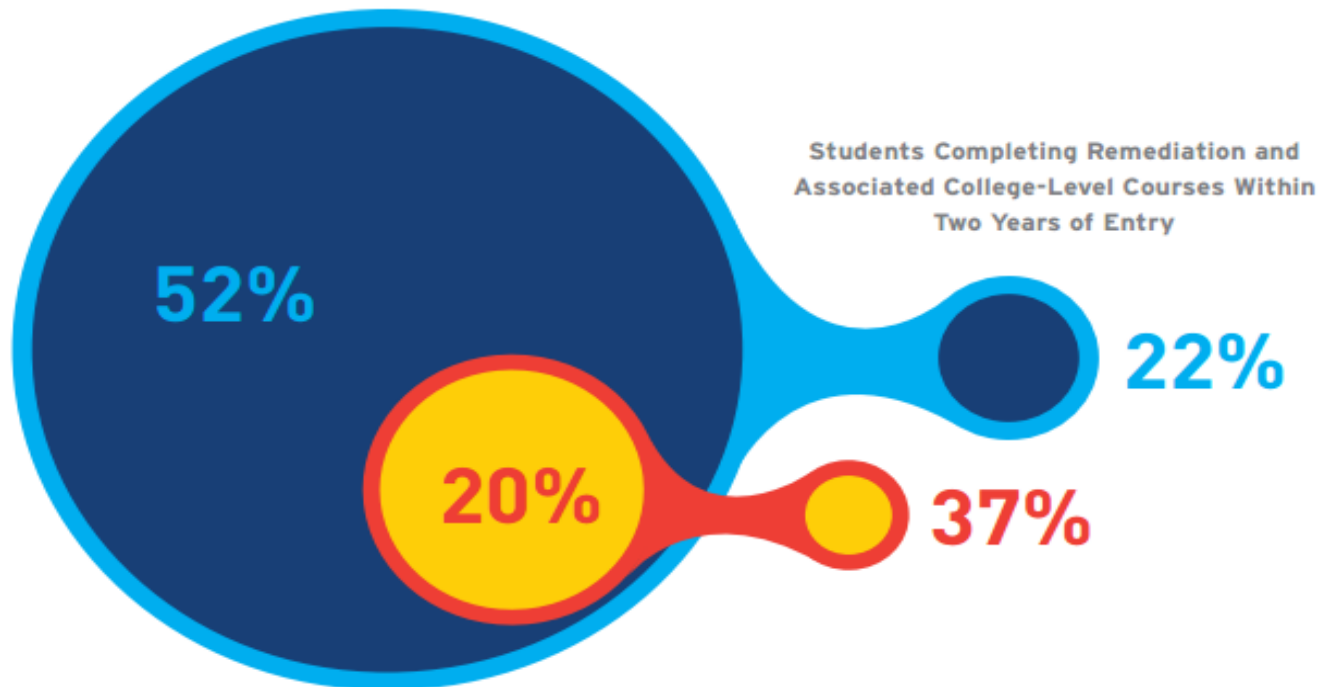
	State
Graduates (N)	132,661
Attending Illinois Community Colleges (N)	42,256
Attending Illinois Community Colleges (%)	31.9%
Enrolled in Remedial Courses (N)	20,894
Enrolled in Remedial Courses (%)	49.4%



**College & Career
Readiness Committee**

Why?

Students Entering Remedial Courses



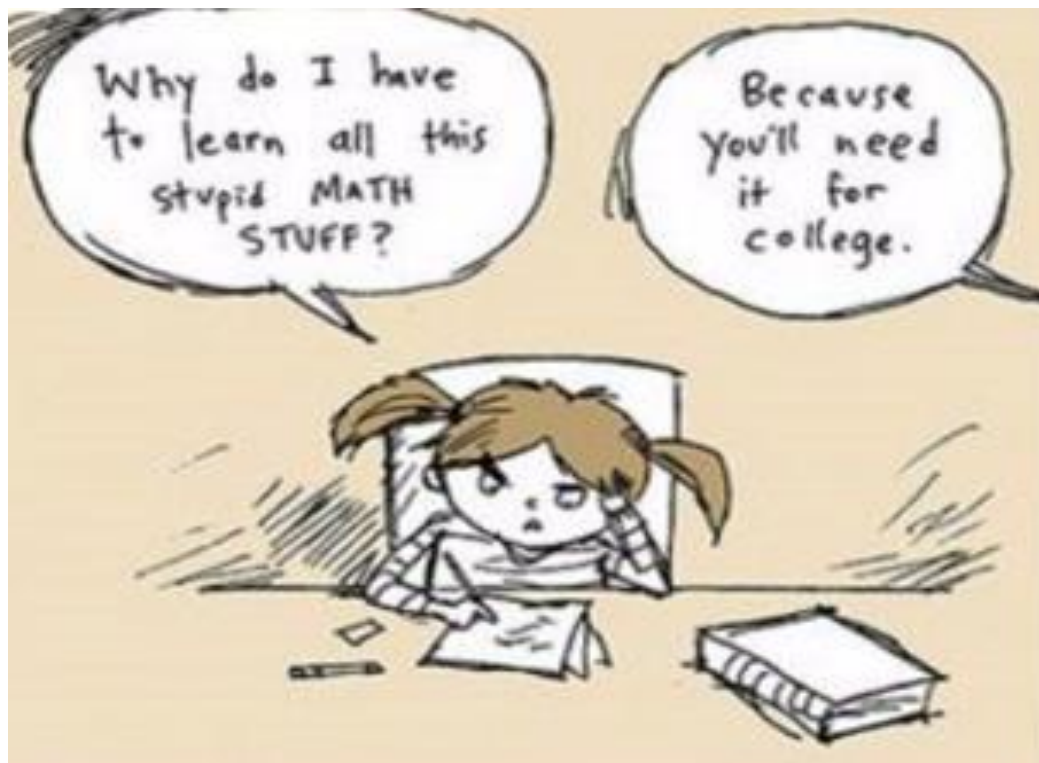
● Two-Year Colleges ● Four-Year Colleges

Source: Complete College America. 2012. *Remediation: Higher Education's Bridge to Nowhere*.



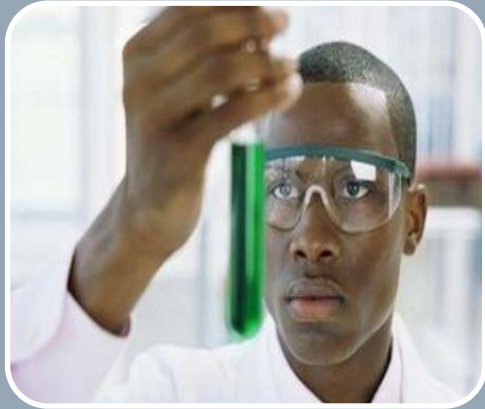
College & Career
Readiness Committee

Why?



College & Career
Readiness Committee

Postsecondary Math Pathways



STEM

Career goals that require application of calculus or advanced algebraic skills

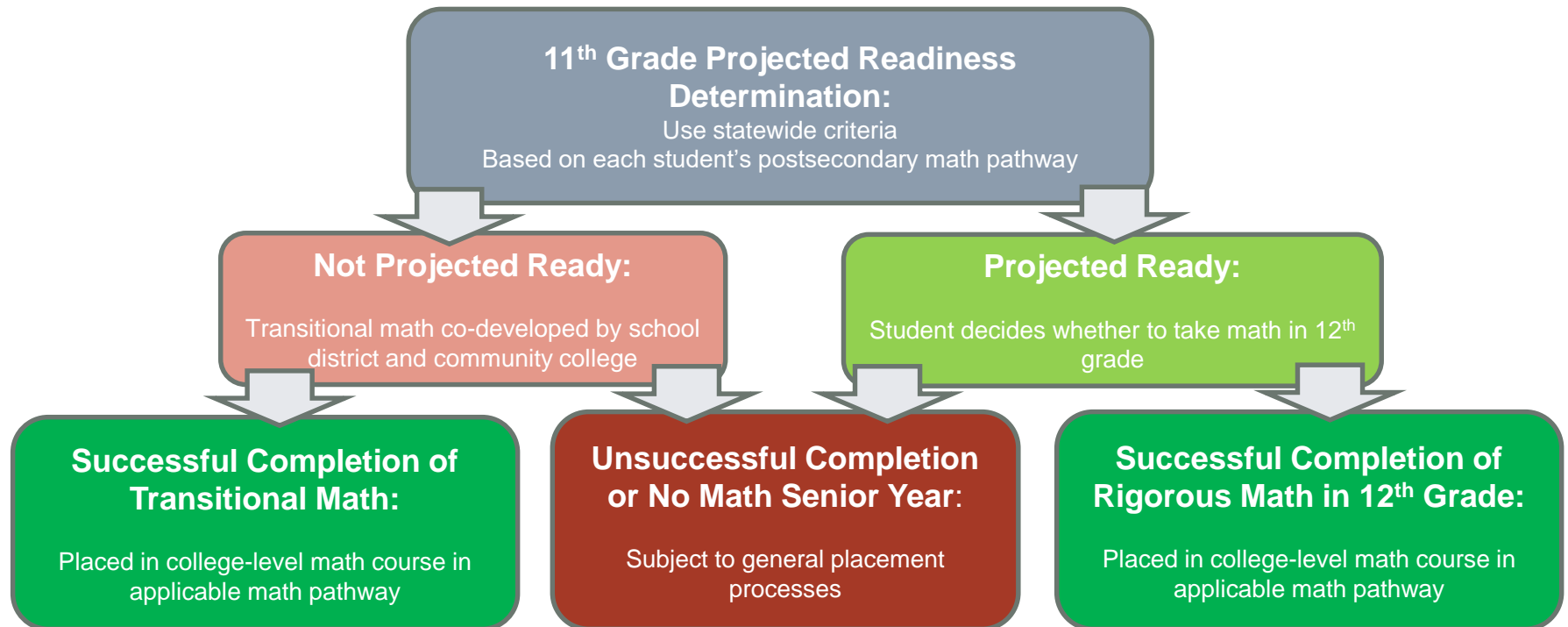
Technical

Career goals in technical fields that do not require application of calculus, advanced algebra, or advanced stats skills

Quantitative Literacy/ Stats

Career goals outside of STEM or Technical – focus on general stats, data analysis, quantitative literacy, problem solving

Transitional Math: A Student's Perspective





College & Career
Readiness Committee



Sherri McLaughlin
smclaughlin@jsd117.org

Vince Walsh-Rock
Vwalsh-rock@csd99.org

www.pwract.org



College & Career
 Readiness Committee